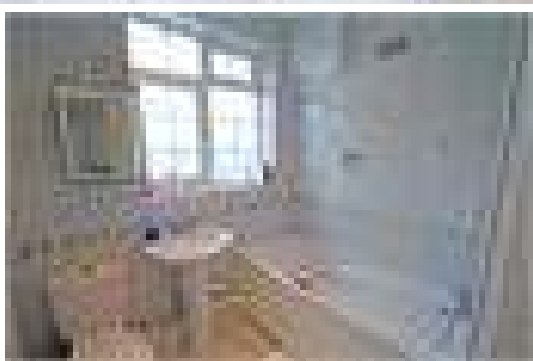


## Bridge Road, Isleworth



A modern and neutrally decorated, south facing four bedroom house with off street parking for two cars. The property comprises lounge leading to conservatory/ dining area with doors onto a lawned garden, fully fitted kitchen, w/c and downstairs fourth bedroom/ second reception room. Upstairs are three spacious bedrooms and a family bathroom. Now

**£1375 pcm - Unfurnished**