

Feltham

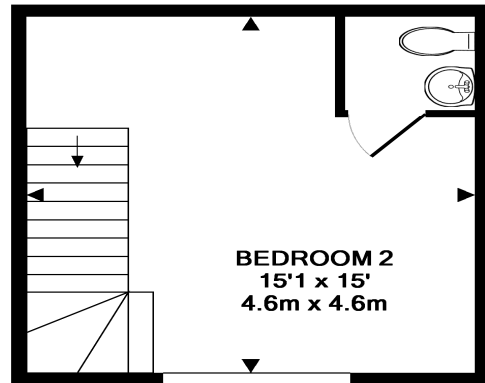
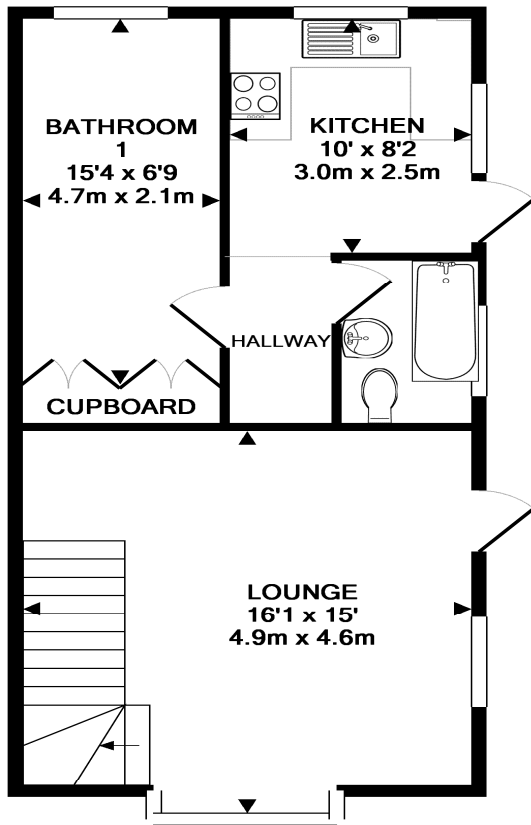


Offered for sale is this unique Victorian detached property overlooking The Green close to high street and station. Comprising two double bedrooms, gas central heating, master bedroom with en suite, modern fitted kitchen and bathroom. Original features. Viewings highly recommended .

£239,950 Freehold.



The Green



1ST FLOOR
APPROX. FLOOR
AREA 225 SQ.FT.
(20.9 SQ.M.)

GROUND FLOOR
APPROX. FLOOR
AREA 483 SQ.FT.
(44.9 SQ.M.)

TOTAL APPROX. FLOOR AREA 709 SQ.FT. (65.8 SQ.M.)

Whilst every attempt has been made to ensure the accuracy of the floor plan contained here, measurements of doors, windows, rooms and any other items are approximate and no responsibility is taken for any error, omission, or mis-statement. This plan is for illustrative purposes only and should be used as such by any prospective purchaser. The services, systems and appliances shown have not been tested and no guarantee as to their operability or efficiency can be given
Made with Metropix ©2011

Please note that it is not our policy to test services, heating systems and domestic appliances and we cannot verify that they are in working order. The buyer is advised to obtain verification from their solicitor or surveyor.

Whilst we endeavor to make our sales details accurate and reliable, if there is any point, which is of particular importance to you, please contact the office and we will be pleased to verify any information for you. All measurements have been taken by a sonic tape and should not be relied upon for their accuracy, and could be subject to a small margin of error.

For a free valuation, call now! T 020 8831 9290